



# WHAT'S NEW AT SFU?

## THE RESOURCE AND ENVIRONMENTAL PLANNING PROGRAM AT SIMON FRASER UNIVERSITY

Deanna Cummings,  
Tira Okamoto,  
Alexander Hook,  
Alexis Coutu-Marcotte, and  
Andréanne Doyon RPP, MCIP

The Resource and Environmental Planning Program (REPP) is situated within the School of Resource and Environmental Management (REM) at Simon Fraser University (SFU). We are the only program in Canada that specializes in interdisciplinary training in policy, natural science, and social science as applied to natural resource and environmental planning. Students learn how to improve the sustainable use of natural capital by

- collecting scientific data
- putting this data in a social context
- making applied decisions
- providing the ecological and social rationale for planning decisions

While REPP is primarily known for its focus on natural resource planning, the program's environmental focus has diversified recently with the addition of new faculty members.

Dr. Clifford Atleo specializes in Indigenous governance and self-determination. He is currently working on projects related to cleaner marine transport options for coastal Indigenous communities and Indigenous territorial integrity in the era of COVID-19.

Dr. Tammara Soma is a co-founder of the Food Systems Lab and a Registered Professional Planner (RPP). Soma works on projects related to food systems

1 Gardening workshop with the planning students on SFU Campus. 2 SFU Quad. Photos: Alexander Hook

planning, social impacts of waste, food and agricultural technologies, and the repair economy and infrastructure.

Dr. Andréanne Doyon is a RPP and the Director of REPP. Dr. Doyon works on equity and environmental planning projects, such as resilience planning, just nature-based cities, and equitable implementation and evaluation of urban greening and climate action.

Professor Meg Holden holds a joint appointment in REM and Urban Studies. Holden's work is in pursuit of pragmatic sustainability and quality of life solutions for contemporary cities. She teaches and conducts research in the domains of urban and regional planning, policy, and sustainable development.

### STUDENT RESEARCH

To showcase some of the amazing work taking place in REPP, we wanted to share some of our graduate students' research. We present their work within four themes that illustrate the uniqueness of our program: environmentally-focused, hands-on learning, socially engaged, and forward-thinking.

### ENVIRONMENTALLY-FOCUSED

Our interdisciplinary program stands out because we employ planning lenses and add invaluable environmental-focused and ecological frames. REPP alumni have gone to work in positions such as Policy Analyst for the B.C. Climate Action Secretariat, Sustainability and Alternative Energy Coordinator for Summerland, BC, and Environmental Assessment Coordinator for the Metlakatla Stewardship Society.

Current environmental planning student projects include:

- Decolonizing planning methods on Xwe'tay/Lasqueti Island – Madeleine MacLean
- Addressing the management of bio-plastics through a sustainability lens – Nadia Springle
- Nature-based solutions for Reconciliation-informed climate change adaptation – Anwen Rees
- Indigenous water governance under the Water Sustainability Act – Andrew Palmer



# Planning a survey?

**Book a complimentary review**

[Surveys.TheWGroup.ca/Discover](https://www.surveys.thewgroup.ca/discover)

*Surveys by* 

Your Municipal Survey Experts

## HANDS-ON LEARNING

Whether travelling up BC's coast to work with Indigenous communities or learning about land use planning in the Fraser Valley, our program allows us to experientially engage and apply what we have learned in our research. In REPP, we are provided with the knowledge and skills needed to identify and understand environmental challenges and contribute to solutions.

Current applied research student projects include:

- Creating a management & implementation tracking tool for cumulative effects upon Metlakatla Nations' housing and livelihoods – Elaine McAloney
- Coal transitions and local government entrepreneurialism in Alberta – Martin Mateus
- Leveraging the management of natural resources through local government entrepreneurialism in Northern BC – Alexis Coutu-Marcotte
- App-based agricultural food loss quantification in southwestern B.C. – Alexander Hook

## SOCIALLY ENGAGED

REPP feels like a big family. We carry very diverse backgrounds, and the experiences of others enrich our learning. We are privileged to study alongside faculty who empower us to understand current topics from interdisciplinary perspectives. Justice, equity, diversity, and inclusion form the foundation of our ethos and our research and practice.

Current socially-engaged student research projects include:

- Addressing Indigenous systemic public health inequities through community-driven solutions – Deanna Cummings
- Decolonizing climate policies for a just transition to a low-carbon future – Maya Molander
- Applying a social innovation approach to expanding the farm-to-school program in B.C. – Hafsa Salihue

## FORWARD-THINKING

REPP students put bold ideas into action. From our coursework to our research projects, we push the envelope. We call on the field of planning to address our world's

*We call on the field of planning to address our world's wicked problems, such as climate resilience, food justice, and equitable adaptation.*



wicked problems, such as climate resilience, food justice, and equitable adaptation. We hold our projects in our hands as the seeds to grow creative solutions.

Current forward-thinking student projects include:

- Centring the right to food in circular food economies in Vancouver – Jamie-Lynne Varney
- Resilience in municipal and regional strategic planning documents in Canada – Laura Beattie
- Evaluating equity and justice within urban climate adaptation planning – Tira Okamoto

## UNDERGRADUATE PROGRAM

In 2020, REPP launched the Bachelor of Environment, majoring in REM Planning. The undergraduate planning degree was granted preliminary accreditation by the PSB Board of Directors (and will soon be fully accredited). It is the first degree of its kind in the lower mainland and, like our graduate program, it specializes in environmental planning and takes full advantage of REM and the Faculty of Environment. Students graduating with this degree are prepared to work in broadly defined areas of resource management or planning, including fisheries management, food and agriculture, sustainable planning



and governance, forest management, sustainable energy and transportation, water resource management, environmental planning, ecosystem management, and First Nations resource management.

REPP is going through many exciting changes, from our new undergraduate programming, new faculty members, and a diverse and engaged student body. As current graduate students in REPP, we have highlighted what makes us feel unique as a program and the important contributions to the body of planning research we are making as budding planners.

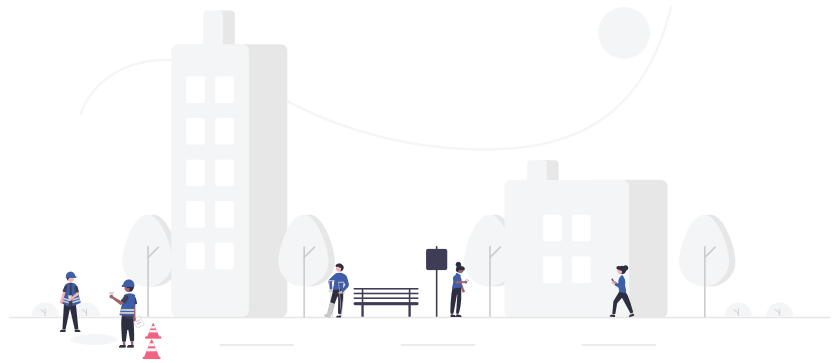
SFU's REPP is the final program of the four accredited university planning programs to provide its update over the past year. It has been a pleasure to read about what the other schools have been working on and the changes they are going through. We hope through the quarterly updates that collectively we build upon and grow the relationships between the four planning schools and illustrate the web of connections we have together as a larger community. ■

Deanna Cummings, Tira Okamoto, Alexander Hook, and Alexis Coutu-Marcotte are Master of Resource Management (Planning) students. Dr. Doyon is an Assistant Professor in the School of Resource and Environmental Management and the Director of the Resource and Environmental Planning Program

# View a few sample municipal surveys.

*Experience the difference*

[Surveys.TheWGroup.ca/Sample](https://Surveys.TheWGroup.ca/Sample)

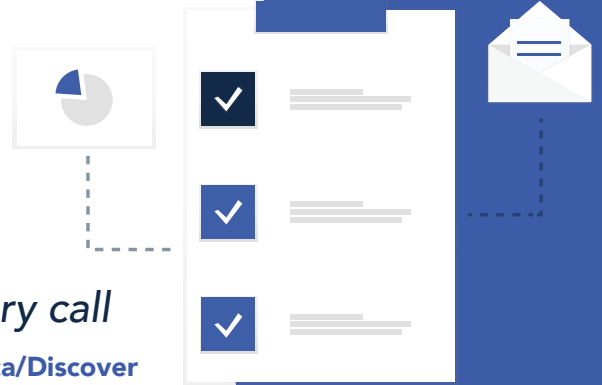


Surveys by



Your Municipal Survey Experts

# Want a second opinion on your survey design?



*Book a discovery call*

[Surveys.TheWGroup.ca/Discover](https://Surveys.TheWGroup.ca/Discover)

Surveys by



Your Municipal Survey Experts