



**Awards for Individual Achievement**  
**Award for Leadership in Advocacy & Innovation:**  
**Kim A. Fowler RPP, MCIP**

Kim received her Master of Science in Planning degree from the University of Toronto and has had an exemplary career as a practicing planner over the last 30 years. She is the Manager of Long-Range Planning, Energy & Sustainability at the Regional District of Nanaimo and has a rich history of working in a variety of jurisdictions focusing on a diversity of planning topics. As an innovator and advocate for constructive change, four of the areas where she has excelled include:

- Providing sustainability leadership at a local and regional level;
- Helping initiate and carry out climate action;
- Introducing a Triple Bottom Line approach to development planning; and
- Being involved in social, affordable, and integrative housing.

Kim has also worked on a Lifecycle Infrastructure Cost Tool, assisted with adding a sustainability component to the Federation of Canadian Municipalities' Local Asset Management program, and represented PIBC on Asset Management BC for over a decade. Kim is an innovator who refuses to accept conventional wisdom and ways of doing things and strives to push the envelope and take planning to a higher level.

**Annual Student Fellowship**  
**Award Winners**



**AUTHOR: Jasmin Senghera. UBC, School of Community & Regional Planning**

**PRESENTATION: The 15-Minute Suburb: Determining the Accessibility of Amenities in the City of Surrey**

The COVID-19 pandemic has brought the 15-minute city concept back to the forefront. While there has been considerable discussion on the potential of the 15-minute city in many cities around the world, there is a lack of research on the feasibility of this concept in the Canadian suburban context. This research study hones in on the City of Surrey as a case study to address this gap and explore the feasibility of the 15-minute suburb, specifically for the seniors in the city.



**AUTHOR: Chris (Crystal) Oberg, Vancouver Island University, Master of Community Planning**

**PRESENTATION: Indigenous Protected and Conserved Areas Certificate – Building Capacity for Professional Planners in BC**

The IISAAK OLAM Foundation and Vancouver Island University have the first post-secondary program specializing in lands, natural resources, and conservation: Indigenous Protected and Conserved Areas (IPCAs). The IPCA Planning Certificate will help educate a new generation of planners with the skills, knowledge, and capacity to support the establishment and stewardship of IPCAs and other Indigenous-led conservation initiatives in the BC context. This research shared how the certificate was developed and how it can enrich planners' practice.



**AUTHOR: Mailyn Lai, Vancouver Island University, Master of Community Planning**

**PRESENTATION: "Natural" Disasters and Natural Assets: The Path to Climate Change Resiliency**

Natural assets are environmental features that provide vital services for our communities. However, they are largely undervalued and unrecognized as valued assets. This research explores how natural assets can serve as a change element for municipalities to bridge the gap between case study results and policy implementation.



**AUTHOR: Kristina Bell, Vancouver Island University, Master of Community Planning**

**Presentation: Unpacking Form-based Codes in a British Columbia Planning Context**

Form-based codes (FBCs) have been advertised as the answer to our planning problems, but where are BC's FBCs? Kristina's research examines the applicability of FBCs to planning under the Local Government Act in BC and explores the implications of trying to approximate them in practice with a case study on Whistler. This work shared key lessons learned and recommendations for local government planning.

# Planning a survey?



**Book a complimentary review**

[Surveys.TheWGroup.ca/Discover](https://Surveys.TheWGroup.ca/Discover)

Surveys by

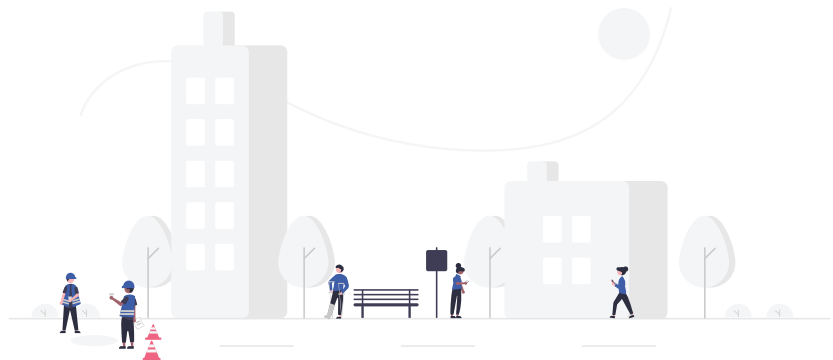


Your Municipal Survey Experts

## View a few sample municipal surveys.

*Experience the difference*

[Surveys.TheWGroup.ca/Sample](https://Surveys.TheWGroup.ca/Sample)



Surveys by



Your Municipal Survey Experts