

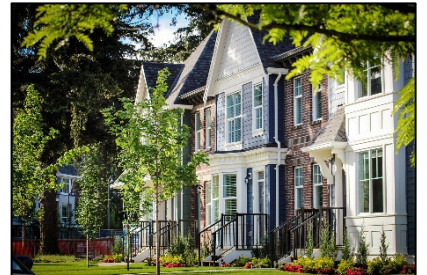
# PLANNER I (Full-Time)

## Planning Department



### Overview

The City of Chilliwack is one of the fastest growing communities in Canada and is home to more than 100,000 residents. As Chilliwack continues to grow, densification of our urban corridor continues to progress leading to innovative design and revitalization of the downtown core. In addition, development of large-scale industrial projects continues due to the prime location of Chilliwack as a gateway between the lower mainland and the rest of Canada. In this growing community, Chilliwack's Planning Department offers opportunities for planners to gain a broad range of experience by working on a variety of exciting projects and development applications located within the urban corridor, hillsides (subject to environmental and geotechnical constraints), the Agricultural Land Reserve and properties subject to floodplain considerations.

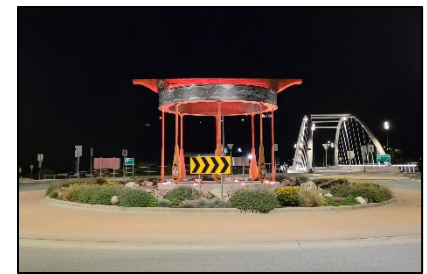


### Are you the one we're looking for?

If you want to work for a supportive, forward-thinking employer in a City with exceptional outdoor amenities including world class hiking, mountain biking and fishing only minutes away, easy access to Cultus Lake and a rich history, then Chilliwack is the place for you.



The City of Chilliwack is committed to truth and reconciliation and strives to create an inclusive and accessible workplace. Chilliwack is proud to be a competitive employer offering opportunities for professional development including continuing education, competitive compensation and comprehensive benefits packages, including reimbursement of moving expenses, and a focus on corporate wellness. This position also includes a 10% wage increase for employees who obtain their Registered Professional Planner certification confirmed by the Canadian Institute of Planners.



In this dynamic and challenging position in Development Planning, you will have an opportunity to engage in a variety of planning related tasks. In order to be successful as a Planner I, you must have exceptional interpersonal, written and verbal communication skills with an ability to grasp concepts quickly and interpret complex technical information, policies and procedures. In addition to your excellent interpersonal skills, you are a highly motivated individual that is goal-oriented and can work efficiently with a varied workload. You are also a critical thinker with a demonstrated ability to problem solve and seek alternative solutions.



Supported by the Manager of Development Planning and as part of a collaborative and diverse team, you will: assist in the efficient operation of the Planning Department through a variety of activities involving development application review, current planning, zoning, official community plan, land use changes, urban design and various comprehensive planning projects as well as daily interactions with the public.

**Please see attached job description for more information.**

### How to Apply:

**Job Title: Planner I (Full Time)**

**Compensation: \$47.71/hour (additional 10% for Registered Professional Planners)**

**Competition Number: 2025-12**

**Closing Date: February 18, 2025**

Visit: <https://jobs.chilliwack.com/> to apply for this or other positions.